

Vanagon Sliding Door, Quiet Guide-Bearing Kit



These 4 bearings (and spacing washers) replace the steel guide bearings in your 1985-1991 (including some 1984's) Vanagon; using (from rear to front, as pictured above) an amber-colored urethane covered bearing (item 32 in *Sliding Door Diagram*, below), a tough white Acetal covered bearing (also item 32), and two grey-colored urethane covered bearings (items 34).

Note, these bearings will not correct problems with a misaligned, rusty, and/or debris incrustated door! Also, these are the horizontal *guide* bearings only.

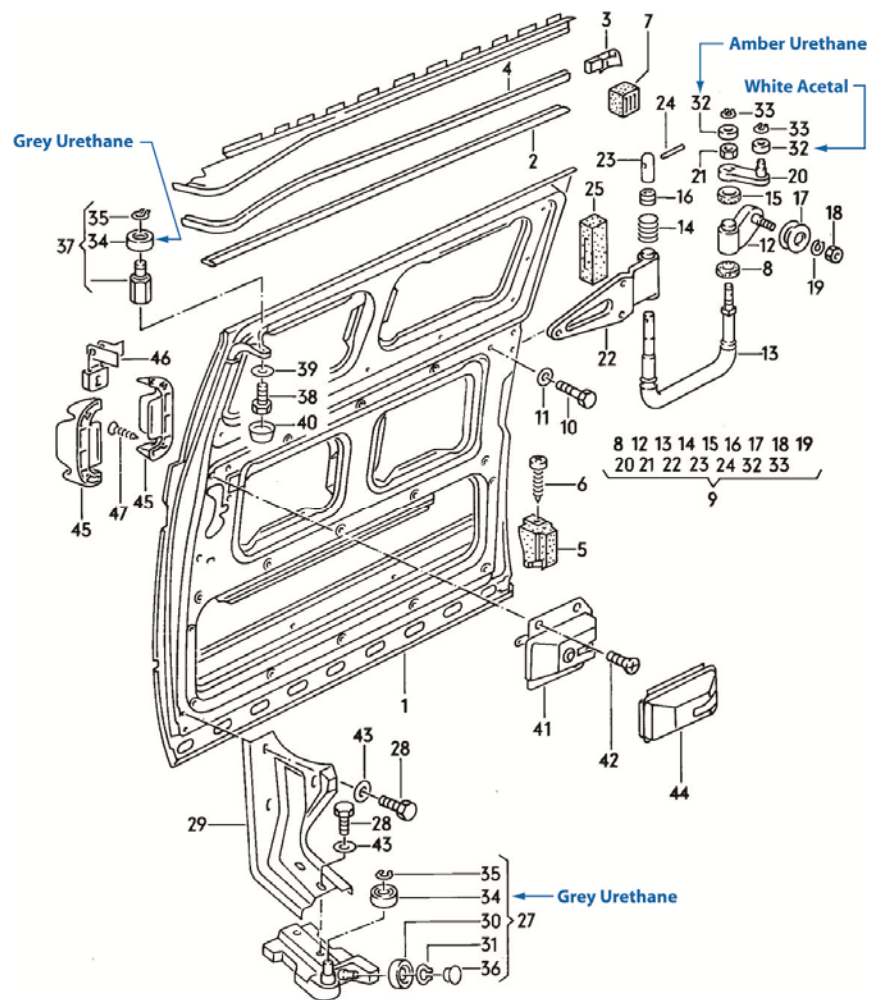
If you'd like additional quieting items, the two Delrin quiet vertical *load* bearings (item 17, the grooved bearing that carries the load of the door on the rear rail; & item 30, the rounded edge bearing that carries the load of the door in the lower front guide slot), and the door stop cushion (item 10 in *Sliding Door Cover Diagram*, below), can be purchased from *GoWesty* or *Van Café*.

Installation

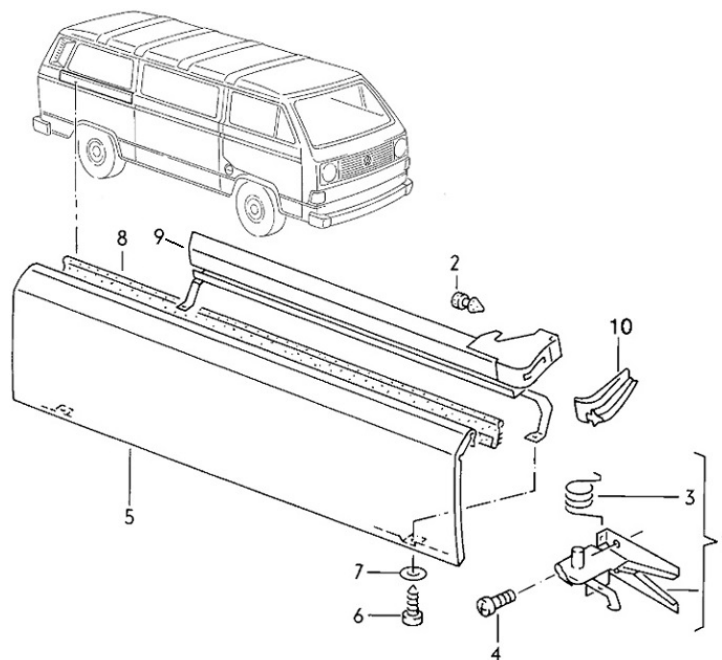
1. Remove the sliding door rail cover. There are online videos showing how to do this step.
2. Slide the door about half-way back, until the grooved load bearing lines up with the circular notch above the rail. Squat down, and use your knee to help lift the door with your right hand, while using your left hand to pivot out the grooved bearing through the notch. Drop the door slightly (for the 2 rear guide bearings to clear the track), pivot the door away from the Vanagon, and then temporarily rest the rear bottom edge of the door on top of an upside-down 5 gallon paint bucket (or similar).
3. With a friend's help holding the front of the door, now slide the door to the back of the van until it stops, then pivot the door on the front guides, until the bottom guide is free. Now you can remove the entire door from the Vanagon, and set it down horizontally on a padded table/work surface.
4. This is the time to thoroughly clean: the rear rail, the upper guide slot, and the lower guide slot. If the rear rail is rusty, pitted, etc.; sand, prime, and paint the rail. Once the paint is dry, lubricate the rail with a spray dry lubricant (like RZ-50, or similar), as a wet lube will collect dirt from your continued Vanagon adventures. Compressed air and an old toothbrush are helpful to remove debris out of the lower guide slot. You can also dry lube the guide slots.
5. Using snap-ring pliers (or similar), remove and set aside the snap rings in the rear hinge assembly (items 33).

6. This is the time to inspect, clean, and lubricate the rear hinge assembly, making sure the arm (item 13) pivots freely and smoothly inside the hinge plate (item 22).
7. Remove the old bearing from the posts (a small bearing puller may be required, with a bit of penetrating lubricant (like PB Blaster, or similar)). Clean the bearing posts, sand them with fine sandpaper, and lubricate them with a spray dry lubricant. Note, all the bearings should slip onto their posts with minimal effort. Never press on the outer race (the urethane or Acetal) of the bearing! If you need a small force to install the bearing on its post, only press on the inner metal race of the bearing; a small socket (just large enough to slip over the post), from a socket wrench set, works well.
8. Slip one small spacing washer over the bearing post on the end of the swing arm of the rear hinge assembly. Slide the white Acetal bearing onto the post, and place another small spacing washer on top of it, sandwiching the bearing between two spacing washers. Re-install the snap ring.
9. The amber-colored urethane covered bearing installs similarly onto the pivot post of the rear hinge assembly.
10. Using snap-ring pliers (or similar), remove and set aside the snap rings from the top front guide bearing, and the bottom front guide bearings (items 35).
11. Clean and lubricate the bearing posts as described above.
12. Slip one large spacing washer over the bearing post on the top front guide. Slide a grey-colored urethane covered bearing onto the post. Re-install the snap ring.
13. The remaining grey-colored urethane covered bearing installs similarly onto the post of the bottom front guide.
14. Put the door back: With a friend's help lifting the door, hold the door about 90° from the van. Slip the top front guide bearing under and up, into the rear of the upper guide slot, making sure that you do not impact the urethane outer race of the bearing as it slips in to the slot. Slip the bottom front guide bearing into the rear of the lower guide slot, again minimizing impact to the urethane outer race of the bearing. Pivot the door on these now inserted front guides, bringing the rear of the door almost parallel to the van. Slide the door about halfway toward the front of the van, and temporarily rest the rear bottom edge of the door on top of an upside-down 5 gallon paint bucket (or similar).
15. Squat down, and use your knee to help lift the rear bottom edge of the door with your right hand, while using your left hand to guide the 2 rear guide bearings up into the track (amber bearing to the rear, white bearing to the front). Pivot the grooved bearing through the notch, and set the grooved bearing onto the rail.
16. Replace the sliding door rail cover.

Note, *Spark of Imagination, Inc.* is not affiliated with either *GoWesty* or *Van Café*. The above note is a recommendation, not an endorsement.



Sliding Door Diagram



Sliding Door Cover Diagram